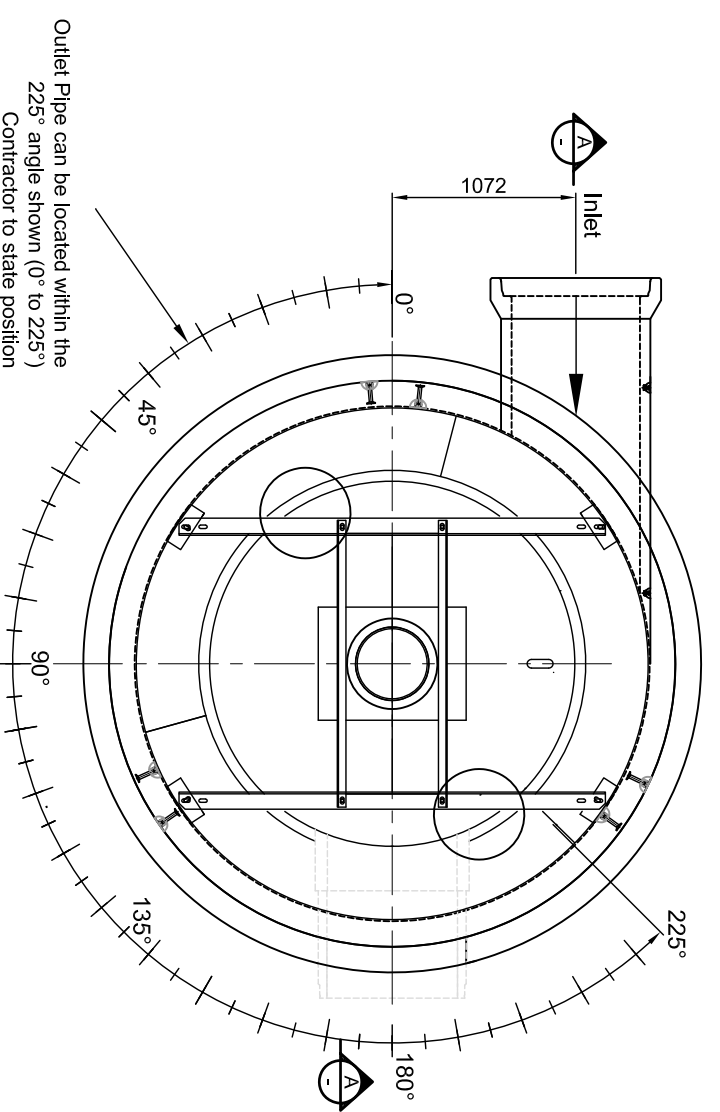


Plan View
"Anti-clockwise" Flow
Alternative configuration
(use only when Standard "Clockwise" flow does not suit site)



Plan View
"Clockwise" Flow
Standard Configuration

NOTES:

1. Inlet & Outlet Pipe Stubs are Epoxied in level i.e 0 % gradient
2. If outlet Pipe is located between 0° & 20° a cast in situ reinforced concrete Corbel may be required, Consult with Hynds to confirm requirements.

MATERIALS

VOL (m ³ /unit) =	NA
WT (ton/unit) =	Ref Table
CODE =	Ref Table

REVISIONS

REV #	REVISION DESCRIPTION:	DATE:	DRAWN:
1	Issued For Construction	06 May 2021	GH
2	Risers Heights Amended To POD Heights	17 Aug 2022	GH

PO Box 58142, Botany, Auckland, 2163
Tel: 09-274 0316
Fax: 09-272 7485
email: technicalservices@hynds.co.nz



©2021 HYNDS PIPE SYSTEMS LTD
This drawing is the property of Hynds Pipe Systems Limited. Not to be disclosed to any other person without permission from Hynds Pipe Systems Limited. It is submitted for use only in connection with proposals and contracts of Hynds Pipe Systems Limited upon the express condition that it is not to be reproduced or copied in any form. Data to be used only with reference to products manufactured and supplied by Hynds Pipe Systems Limited.

ISO 9001 CERTIFIED MANAGEMENT SYSTEM

PROJECT DESCRIPTION:

Hynds Pipe Systems - Stormwater
Downstream D4defender Ø3000
Pinnacle Pipe Version
North Island

SERVICE DETAIL:

Downstream Defender Hydro Ø3000mm
North Island Type DD3000 (Type 1)

General Arrangement - Customer Approval

REFERENCE/QUOTE NUMBER: -

DRAWN: GH DESIGN: GH CHECKED: (Initials)
SIGNATURE: SIGNATURE: SIGNATURE:

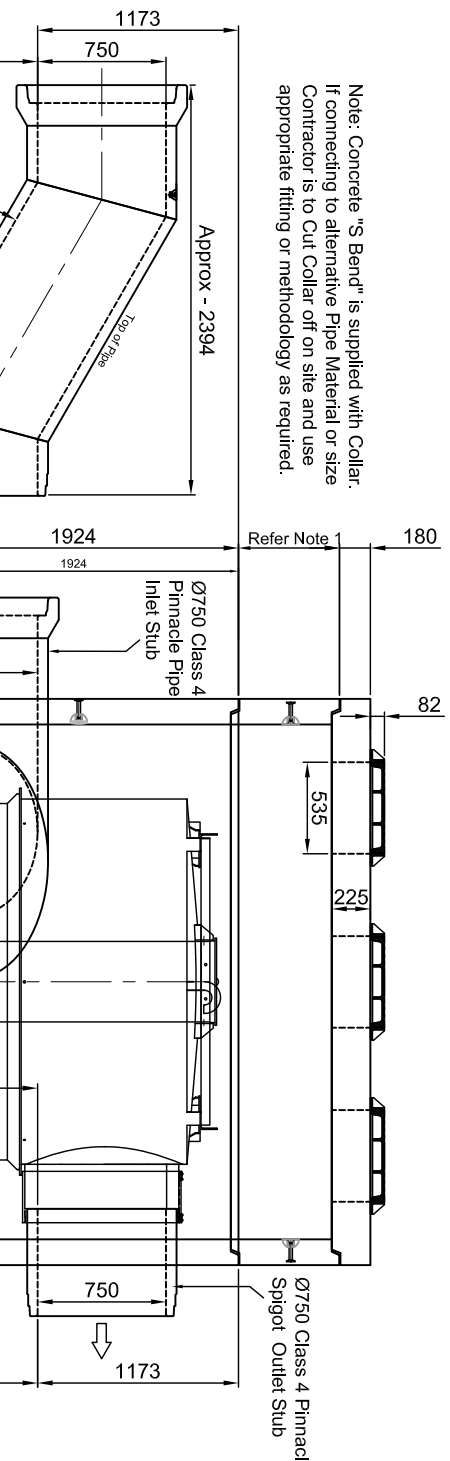
SCALE: As Shown Note: Do not scale drawing
PAPER SIZE: A3 if in doubt **ASK!!!** DATE: 29-Aug-22

DRAWING NUMBER: T8039 SHEET NUMBER: 1 of -- REVISION NUMBER: 2

I AUTHORISE HYNDS PIPE SYSTEMS LTD TO PROCEED WITH THE MANUFACTURING OF THE PRODUCT AS DETAILED ABOVE.
I ACKNOWLEDGE THAT, ONCE MANUFACTURED, THEY ARE DEEMED TO BE MY (CONTRACTOR'S) PROPERTY & ARE NON-REFUNDABLE. STORAGE & HANDLING FEES WILL BE INCURRED FOR PRODUCTS THAT ARE NOT DELIVERED WITHIN 1 MONTH OF THE DATE AGREED AT THE TIME OF ORDER. PRODUCT NOT DELIVERED WITHIN 3 MONTHS OF THE DATE AGREED WILL BE DESTROYED AT MY EXPENSE.

NAME: SIGNATURE:
DATE:

1. Varied depths can be achieved by placement of a different or additional risers or Lid rings on top of detailed standard unit.
2. Lid Designed to HD60 Vehicle Loads
3. Suitable for installation in B2 Exposure Classification Environment
4. Consult with Hynds where U or C Exposure Classification is required
5. Flow orientation - Clockwise
Anti Clockwise
Please also cross out un-wanted option on Drawing



Main Component Weights

Item	Code	Weight (each)
DD3000 - Based Riser	DD3000BKTDNI	12.30 Tonnes
DD3000 - Mid Kit Riser	DD3000MDKTDNI	9.97 Tonnes
DD3000 - Lid	LD30225HD6H3	5.00 Tonnes
Frame & Cover	CIMHDCF	0.058 Tonnes
DD3000 - S Bend	DD3000SB	1.12 Tonnes