

# Scruffy Domes

Technical Guide D5.14

A durable, galvanised steel dome designed in stormwater applications to provide a debris screen for manholes



## Applications

Stormwater systems - Typical locations include: Parks, Wetlands and overland flow paths

## Product Attributes

Available standard in galvanised steel. A powder coated finish is available on special order.

Easy installation

Dome feature prevents the build up of debris, people and animals from entering the system

Hinged, lockable control screens can be installed in high access areas

Two height options

## Approvals/Standards

Designed in accordance with Auckland Council Stormwater Code of Practice DWG SW21

## Quality/Environment/Health & Safety

ISO 9001:2015, ISO 14001:2015 and ISO 45001:2018



The scruffy dome is made of galvanised steel and is used in stormwater applications to provide a debris and security screen for manholes.

### Design Specifications

- The type 1 debris screen is a full height design, suitable for manholes with a 600mm diameter or larger. (Refer to figure 1.)
- The type 2 debris screen has a lower height profile making it less noticeable in areas such as parks and gardens. Suitable for manholes with a diameter of 600 mm or larger. (Refer to figure 2.)

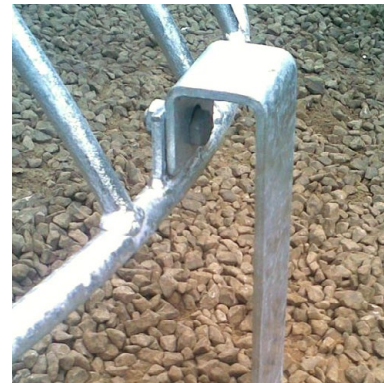
**Note:** Scruffy Domes in Table 1 are only suited to Hyspec Inspection Chambers and Hyspec Manholes. Scruffy Domes in Table 2 are only suited to Pinnacle Inspection Chambers and Pinnacle Manholes.

### Installation

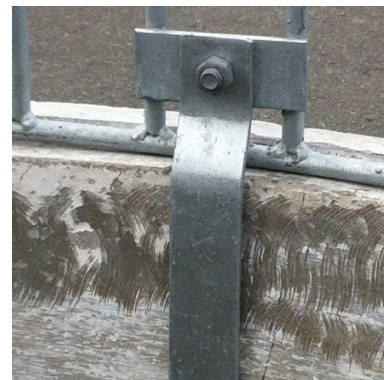
- Dome brackets are bolted to the manhole riser with stainless steel bolts.
- The bolts are purchased separately.

**Note:** The North Island and South Island have different versions of Scruffy Domes with small changes in the bracket design (See photos below). Please contact your local Hynds branch for more information.

## North Island Scruffy Dome



## South Island Scruffy Dome



**TABLE 1 Hyspec Inspection Chamber and Manhole Scruffy Domes (South Island only)**

Product Code	Manhole (mm)	Type	Riser ID (mm)	A = OD of Grille (mm)	B = Height of Dome (mm)
<b>Type 1 High Profile</b>					
MHD0600S	600	1	610	640	300
MHD0675S	675	1	686	715	300
MHD0900S	900	1	914	950	500
MHD1050S	1050	1	1066	1125	565
MHD1050S-H*	1050	1	1066	1125	565
MHD1200S	1200	1	1207	1270	635
MHD1200S-H*	1200	1	1207	1270	635
MHD1400S	1400	1	1372	1430	715
MHD1500S	1500	1	1524	1580	790
MHD1800S	1800	1	1829	1900	950
<b>Type 2 Low Profile</b>					
MHD0600S2	600	2	610	640	150
MHD0675S2	675	2	686	715	150
MHD0900S2	900	2	914	950	170
MHD1050S2	1050	2	1066	1125	200
MHD1050S2HL*	1050	2	1066	1125	200
MHD1200S2	1200	2	1207	1270	360
MHD1200S2HL*	1200	2	1207	1270	360
MHD1400S	1400	2	1372	1430	390
MHD1500S2	1500	2	1524	1580	435
MHD1800S2	1800	2	1829	1900	520

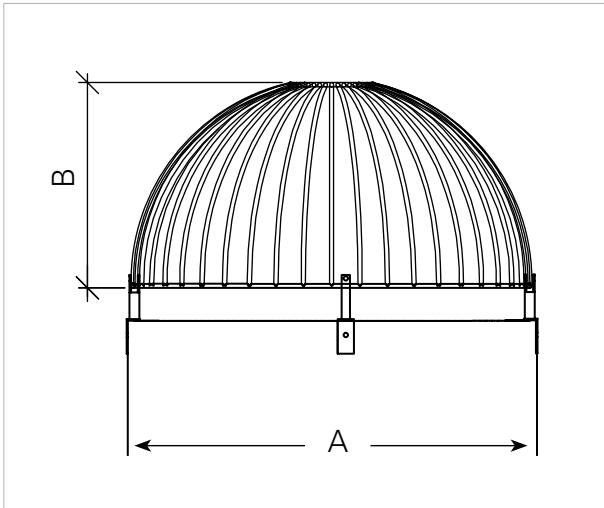
**Note:** Larger sizes 2000, 2300, 2550, 3000mm are available on request

\*H - hinged HL - hinged and lockable

**TABLE 2 Pinnacle Inspection Chamber and Manhole Scruffy Domes for North Island Only**

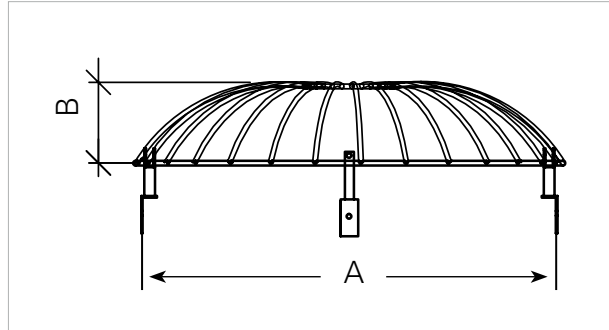
Product Code	Manhole (mm)	Type	Riser ID (mm)	A = OD of Grille (mm)	B = Height of Dome (mm)
<b>Type 1 High Profile</b>					
MHD0600U1	600	1	600	629	300
MHD0675U1	675	1	675	714	300
MHD0900U1	900	1	900	941	500
MHD1050U1	1050	1	1050	1130	565
MHD1200U1	1200	1	1200	1280	635
MHD1350U1	1350	1	1350	1428	715
MHD1500U1S	1500	1	1500	1558	790
MHD1800U1S	1800	1	1800	1878	950
<b>Type 2 Low Profile</b>					
MHD0600U2	600	2	600	629	150
MHD0675U2	675	2	675	714	150
MHD0900U2	900	2	900	941	170
MHD1050U2	1050	2	1050	1130	200
MHD1200U2	1200	2	1200	1280	360
MHD1350U2	1350	2	1350	1428	390
MHD1500U2S	1500	2	1500	1682	435
MHD1800U2S	1800	2	1800	1990	520





**FIG. 1** Dimensions of Type 1 Hynds Scruffy Dome (see table).

**Note:** Brackets shown here are not supplied. Please see the North Island and South Island Scruffy Domes photos.



**FIG. 2** Dimensions of Type 2 Hynds Scruffy Dome (see table).

**Note:** Brackets shown here are not supplied. Please see the North Island and South Island Scruffy Domes photos.



Branches Nationwide Support Office & Technical Services 0800 93 7473

**Disclaimer:** While every effort has been made to ensure that the information in this document is correct and accurate, users of Hynds product or information within this document must make their own assessment of suitability for their particular application. Product dimensions are nominal only, and should be verified if critical to a particular installation. No warranty is either expressed, implied, or statutory made by Hynds unless expressly stated in any sale and purchase agreement entered into between Hynds and the user.