

Slotted Channel Covers

Technical Guide D17.4

Slotted Channels for design-sensitive applications.



Applications

Pedestrian Areas
Shopping Centres
Commercial Areas

Product Attributes

Channel made of recycled PP – environmentally friendly
Light and easy to handle for installation
Galvanised steel slotted cover
Aesthetically pleasing to surrounding pavements

Approvals/Standards

Load rating as per EN 1433

Quality

ISO 9001:2008 Quality Management System

We are the supply partner of choice for New Zealand's civil construction industry, specialising in water and infrastructure based solutions.

Slotted Channel Covers

Engineered for design-sensitive applications.

Requirements

- For the drainage of areas with architectural demands
- The surface drainage has to be discreetly hidden.
- Processing of all standard surface layers and stone slabs should be possible.
- The surface water needs to be drained reliably.

Applications

- For areas and facades with high visual demands
- Especially for public and commercial areas

Solutions

- The narrow visible slot provides an elegant drainage solution
- For all common surface material including asphalt
- Provides a consistent look across your project even with different surface materials
- Functional drainage requirements are completely met
- Easy access to channel run through access points
- Slotted gratings made of galvanised steel



FIG. 1 Multi-functional Arena, Germany

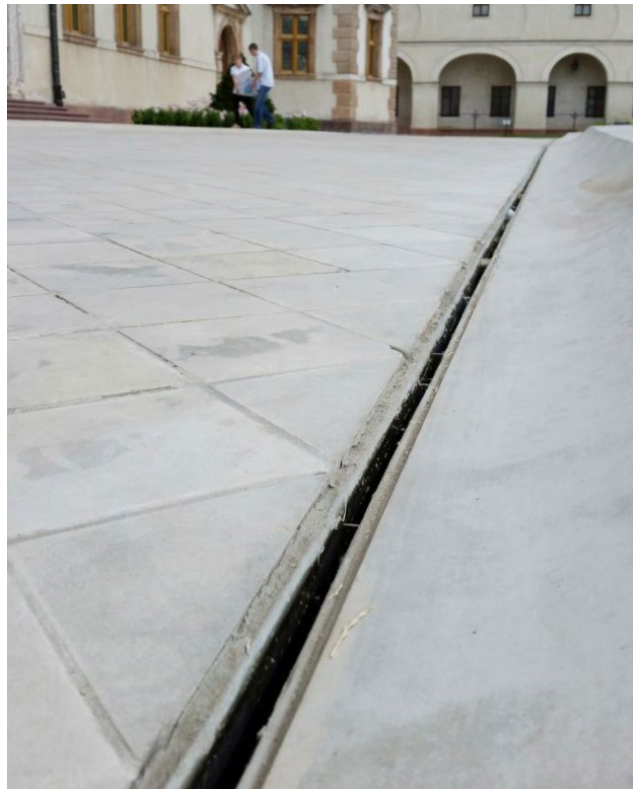


FIG. 2 Bishops Palace, Poland

The benefits of Slotted Channel Covers



Easy installation

- Easy handling and installation
- Integrated tongue and groove connection of channels and covers allows an easy installation without long adjustment

= Cost Reduction



Individual Solutions

- Slotted covers made of galvanised steel
- Individual slotted covers with modified neck height, crossbars in the slot and more design possibilities
- Easy preparation of corner connections possible

= Flexibility



Connection possibilities

- Access covers fit on channels and trash boxes
- Connection to stormwater pipes are possible from trash box and channels (from the side or bottom)

= Flexibility



Technical features

- Slotted covers are rivetted, that means no rusting of welded joints
- Strengthened slot edge
- Reinforcements under the cover and material thickness provide perfect balance between weight and stability

= Quality / Security



Attractive product

- Perfectly designed drainage line blends harmoniously in the appearance of the object – 12.5mm slot width

= Uniqueness / Exclusiveness / Originality

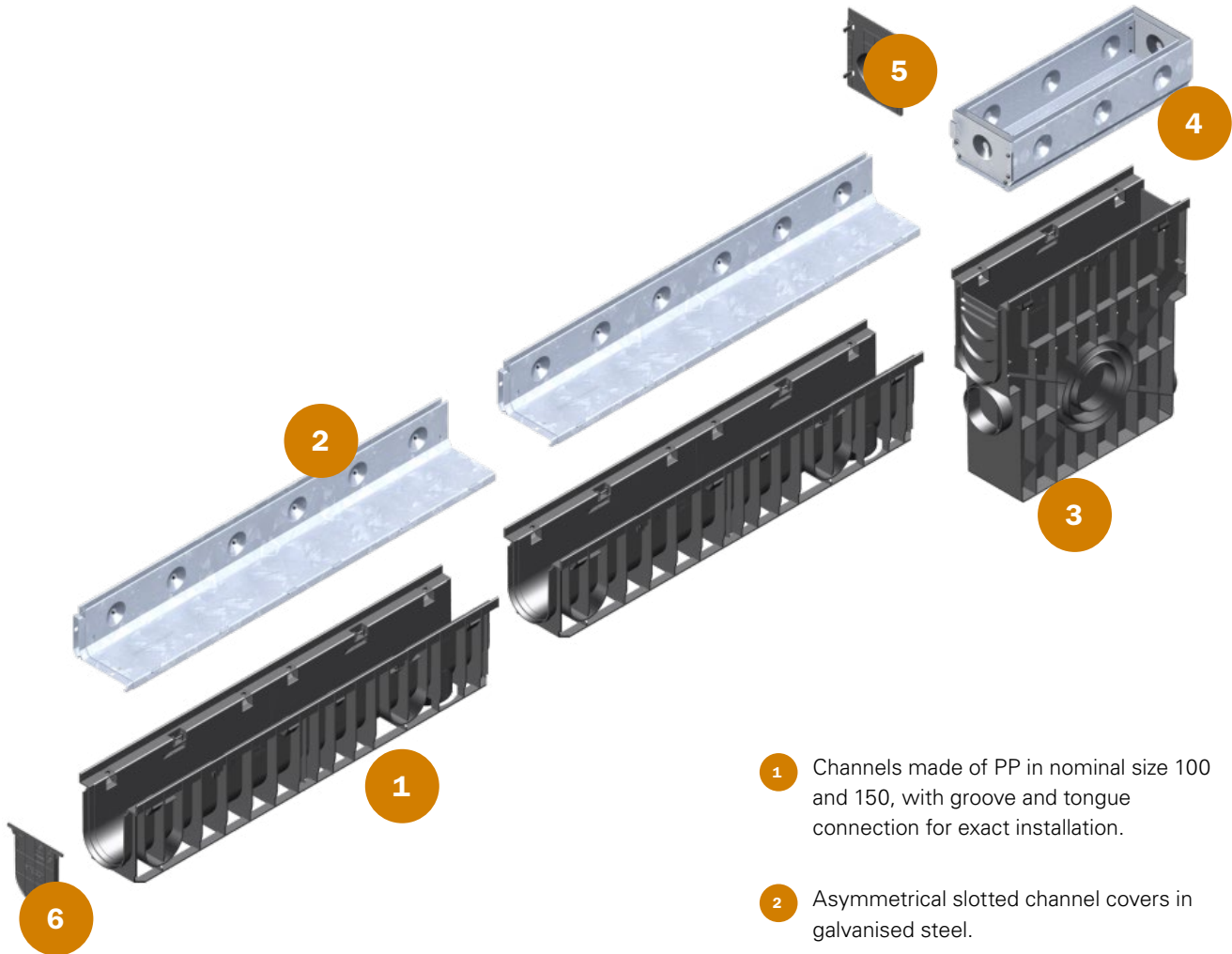
Components

Load Classes

European Standard EN 1433



Load Class C 250kN
Approximate Wheel Load 5,000 kg



- 1 Channels made of PP in nominal size 100 and 150, with groove and tongue connection for exact installation.
- 2 Asymmetrical slotted channel covers in galvanised steel.
- 3 Trash box with DN 175 pipe connection, with fitting access cover.
- 4 Asymmetrical slotted access covers in galvanised steel.
- 5 End caps with or without outlet.
- 6 End caps with DN 100 outlet.

Slotted 100 Channel and Access Covers

Class C 250kN



FIG. 3 Slotted Channel Cover 100*



FIG. 5 Slotted Access Covers 100*



FIG. 7 Extraction Bail

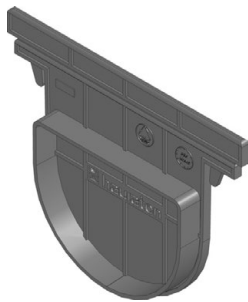


FIG. 4 CHH01401300.2

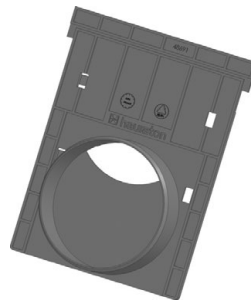


FIG. 6 CHH01401300.3

TABLE 1 Slotted Channel Covers 100 C 250kN

Code	Description	Length (mm)	Width (mm)	Height (mm)	Intake cross-sect cm ² /m	Drainage cross- sect cm ²	Weight (kg)	Figure #
CHH01402550	Channel PRO SLOTTED 100 Galv Asymmetrical C250	1000	160	331	120	92	10	3
CHH01402556	Access Box PRO SLOTTED 100 Galv C250	500	160	504	297	-	11	4
CHH01402452	Extraction Bail for Cover 100 & 150 (2 piece)	-	400	150	-	-	-	5
CHH01401300.2	End Cap PRO NC 100 Blank Type 01	-	160	124	-	-	-	6
CHH01401300.3	End Cap PRO NC 100 Type 01 with 100mm PVC Outlet	-	160	200	-	-	-	7

Note: *This image does not include the channel that comes as part of the complete item code.

Slotted 150 Channel and Access Covers

Class C 250kN



FIG. 8 Slotted Channel Cover 150*



FIG. 9 Slotted Access Cover 150*



FIG. 11 Extraction Bail

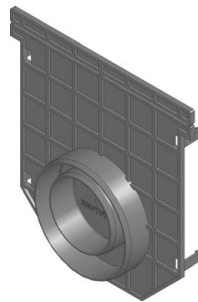


FIG. 10 CHH01401364.2

TABLE 2 Slotted Channel 150 C250kN

Code	Description	Length (mm)	Width (mm)	Height (mm)	Intake cross-sect (cm ² /m)	Drainage cross-sect (cm ²)	Weight (kg)	Figure #
CHH01402552	Channel PRO SLOTTED 150 Galv Asymmetrical C250	1000	212	391	120	230	11	8
CHH01402558	Access Box PRO SLOTTED 150 Galv C250	500	212	518	321	-	24	9
CHH01402452	Extraction Bail for Cover 100 & 150 (2 piece)	-	400	150	-	-	-	10
CHH01401364.2	End Cap PRO NC 150 Type 01 with 75-110 PVC Outlet	-	208	218	-	-	-	11

Note: *This image does not include the channel that comes as part of the complete item code.

Slotted 200 Channel and Access Covers

Class C 250kN



FIG. 12 Slotted Channel Cover 200*



FIG. 13 Slotted Access Cover 200*



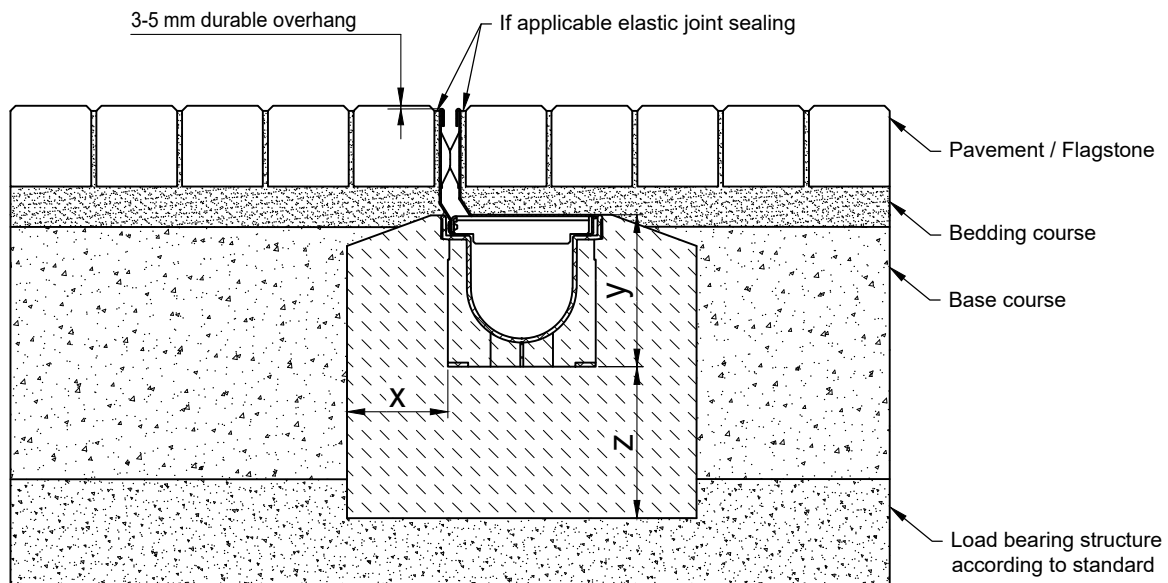
FIG. 14 CHH01401375.2

TABLE 3 Slotted Channel 200 C250kN

Code	Description	Length (mm)	Width (mm)	Height (mm)	Intake cross-sect (cm ² /m)	Drainage cross-sect (cm ²)	Weight (kg)	Figure #
CHH01402554	Channel PRO SLOTTED 200 Galv Asymmetrical C250	1000	262	381	120	294	13	12
CHH01402560	Access Box PRO SLOTTED 200 Galv C250	500	262	752	345	-	36	13
CHH01401375.2	End Cap PRO NC 200 Type 010 with 100mm PVC Outlet	-	258	217	-	-	-	14

Note: *This image does not include the channel that comes as part of the complete item code.

Installation Guidelines



Branches Nationwide *Support Office & Technical Services 0800 93 7473*

Disclaimer: While every effort has been made to ensure that the information in this document is correct and accurate, users of Hynds product or information within this document must make their own assessment of suitability for their particular application. Product dimensions are nominal only, and should be verified if critical to a particular installation. No warranty is either expressed, implied, or statutory made by Hynds unless expressly stated in any sale and purchase agreement entered into between Hynds and the user.

hynds.co.nz
0800 93 7473

HYNDS
PIPE SYSTEMS

The logo for Hynds Pipe Systems features the word "HYNDS" in a bold, white, sans-serif font. Below it, the words "PIPE SYSTEMS" are written in a smaller, white, sans-serif font. A yellow curved line, resembling a stylized pipe or a smile, is positioned at the bottom of the logo.