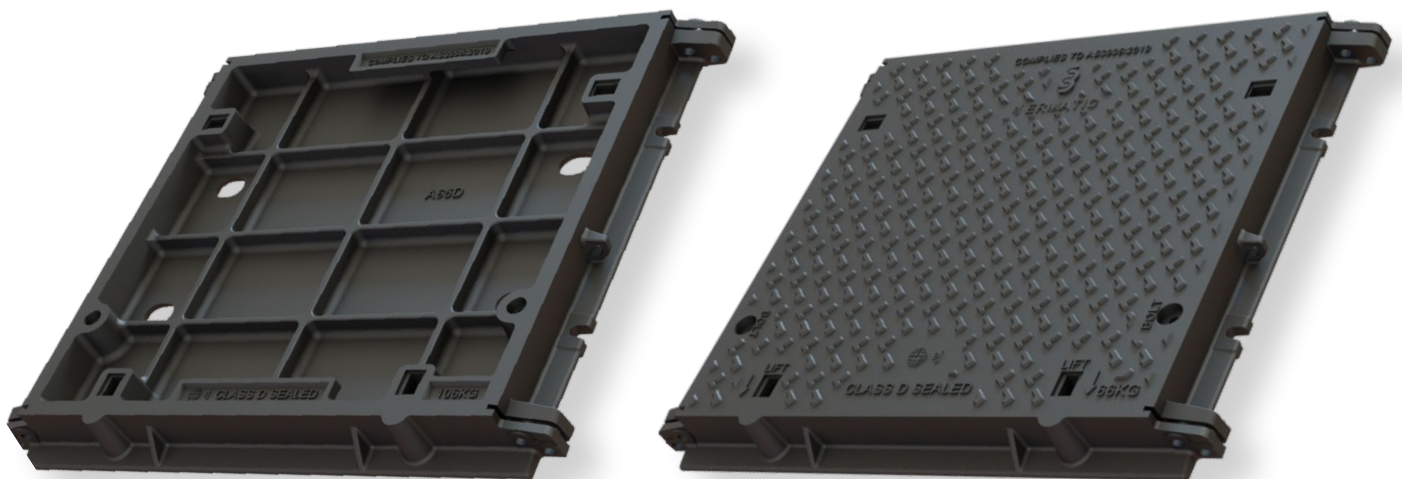


# Specialised Access Covers and Grates

Technical Guide D16.4

Hynds offer a wide range of solid top and infill access cover and grate solutions suitable for Class B through to Class F/G.



01.25 | DRAINAGE | D16.4 GAS AND AIRTIGHT ACCESS COVERS AND GRATES

## Applications

Access to underground services

High loading environments

## Product Attributes

Load rated from Class B through to Class F/G

Gas and Air Tight

Bolt Down Security

Recessed infill or solid top versions

## Approvals/Standards

Complies with AS3996:2019

Complies with EN124

## Quality

ISO 9001:2015 Quality Management

*We are the supply partner of choice for New Zealand's civil construction industry, specialising in water and infrastructure based solutions.*

**HYNDS**  
PIPE SYSTEMS

# Hynds supply a range of Specialised Access Covers and Grates to Australian and New Zealand recognised Standard AS3996:2019 or European Standard EN-124

## Installation

Hynds recommend the use of manhole sealing grease on the mating faces of these gatic covers. This lubricates the surfaces between the cover (or grate) and the frame, making it easier to remove the cover for future inspections. This will also assist to provide an improved seal to reduce surface water infiltration or to trap odour release.

## Features

- All castings are marked in accordance with AS3996:2019 or EN124 to enable identification of manufacturer and supplier.
- All castings are marked with the load rating A to G. The correct class of casting can be supplied to comply with all applications.
- Product with load ratings B to D are readily available.
- AS3996:2019 is a recognised quality standard for manufacture and application in Australia and New Zealand accepted by territory authorities and specifiers.
- Qual Mark operate under an approved quality system based on the ISO 9000 series of standards.

## Design Specifications

- Custom Features  
Stainless Steel edged covers are available on indent in limited sizes.
- Special Lifting Keys  
Complete range of lifting keys and accessories are available. Refer to Technical Guide TA5.1 Access Cover Lifting Tools.

## Testing

- Load and strength testing is regularly conducted in approved test lab facilities as part of the requirements for meeting AS3996:2019 or EN124.

## Durability

- Machining  
All castings are machined to ensure gas and air tightness. This also ensures that all seating is even to maintain uniform wear and stability.
- Material  
All castings are manufactured from ductile iron to ensure maximum strength.
- Coating  
All gas and airtight castings are bitumen primer coated to the AS3996:2019 Standard. This helps maintain the castings appearance prior to installation.

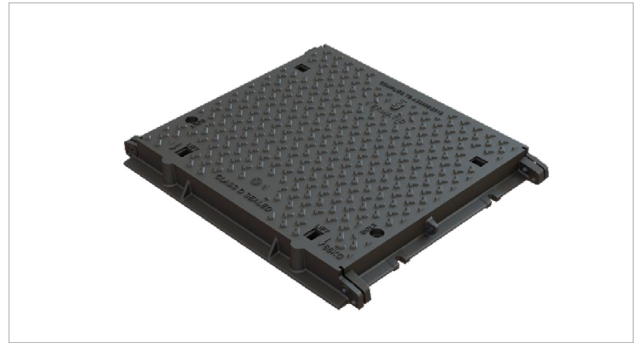
## Available on request

- Circular solid top and infill access covers and frames.
- Square and rectangular solid top and infill access covers and frames.
- Multi-part configurations to suit all applications.
- Trench runs in all load classes
- Brass & Stainless Steel edged decorative covers for retail and commercial high profile applications

## Sample range of models



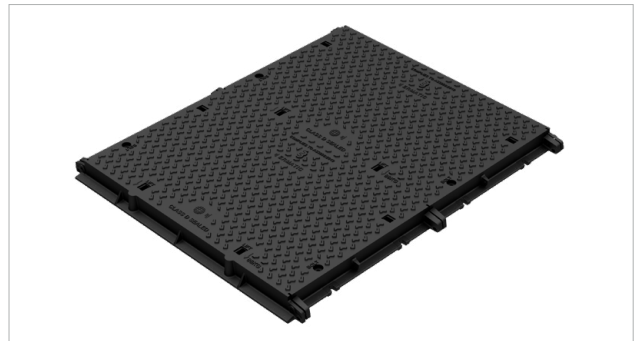
**FIG. 1** Stock code DICIF6060D  
600 x 600 mm Infilled Class D



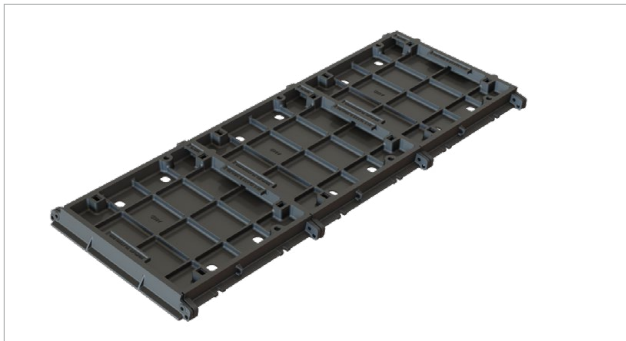
**FIG. 5** Stock code DICST6060B  
600 x 600mm Solid Top Class B



**FIG. 2** Stock code DICIF6012D  
600 x 1220 mm - 2 Part Infill Class F/G



**FIG. 6** Stock code DICST9012D  
900 x 1220 mm - 2 Part Solid Top Class D



**FIG. 3** Stock code DIST6018G  
600 x 1840 mm- 3 Part Infill Class F/G



**FIG. 7** Stock code DIG6060D  
600 x 600 mm Sump Grate Class D



**FIG. 4** Stock code DIG600F  
600 mm Sump Grate Hinged Class G



**FIG. 8** Stock code DICST600F  
600 mm Solid Top Hinged Class G

**Branches Nationwide** *Support Office & Technical Services 0800 93 7473*

**Disclaimer:** While every effort has been made to ensure that the information in this document is correct and accurate, users of Hynds product or information within this document must make their own assessment of suitability for their particular application. Product dimensions are nominal only, and should be verified if critical to a particular installation. No warranty is either expressed, implied, or statutory made by Hynds unless expressly stated in any sale and purchase agreement entered into between Hynds and the user.

**hynds.co.nz**  
**0800 93 7473**

**HYNDS**  
PIPE SYSTEMS

The logo for Hynds Pipe Systems features the word "HYNDS" in a large, bold, white sans-serif font. Below it, the words "PIPE SYSTEMS" are written in a smaller, white sans-serif font. A yellow curved line, resembling a stylized pipe or a smile, is positioned at the bottom of the logo.